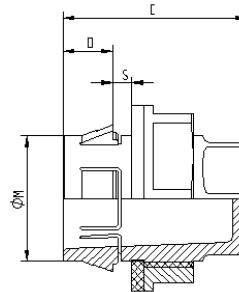
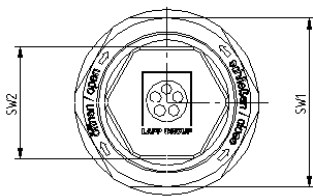


Part number	Part designation / size	Thread length D mm	Pieces / PU
<b>SKINDICHT® BLK-GL-M light grey mounted with O-ring</b>			
52006107	12 x 1,5	6.0	100
52006117	16 x 1,5	6.0	100
52006127	20 x 1,5	6.0	100
52006137	25 x 1,5	8.0	100
52006147	32 x 1,5	8.0	50
52006157	40 x 1,5	8.0	25
52006167	50 x 1,5	10.0	25
52006177	63 x 1,5	12.0	25
<b>SKINDICHT® BLK-GL-M black mounted with O-ring</b>			
52006106	12 x 1,5	6.0	100
52006116	16 x 1,5	6.0	100
52006126	20 x 1,5	6.0	100
52006136	25 x 1,5	8.0	100
52006146	32 x 1,5	8.0	50
52006156	40 x 1,5	8.0	25
52006166	50 x 1,5	10.0	25
52006176	63 x 1,5	12.0	25

**New**

**SKINTOP® CLICK BLK**



SKINTOP® CLICK BLK

**Benefits**

- Up to 70% time saving due to innovative CLICK system
- Simple, free assembly in any position
- Fewer parts, counter nut no longer needed
- No thread required
- Captive

**Application range**

- Blind plug with innovative CLICK system for fast installation in hardly accessible places. Perfect solution wherever threads previously cut must be closed.
- Switch cabinet building
- Measurement, control and electrical applications
- Automation technology
- Plant, apparatus construction

**Approvals (Norm references)**



**Scope of delivery**

- Disassembly tool contained in the delivery scope

**Technical data**

<b>RAL</b>	<b>Colour delivered</b> RAL 7035 light grey
<b>Material</b>	Body: special polyamide Seal: special elastomer
<b>IP</b>	<b>Degree of protection</b> IP 68 - 5 bar
<b>Temperature</b>	<b>Range of temperature</b> -20 °C up to +100 °C

Part number	Part designation / size	M (hole mm)	SW1 / SW2 mm	Overall length C mm	Thread length D mm	S (wall thickness mm)	Pieces / PU
<b>SKINTOP® CLICK BLK light grey</b>							
52109013	CLICK BLK 16	16,3 (-0,2)	14 / 22	28.5	8.0	1.0 - 4.0	50
52109014	CLICK BLK 20	20,3 (-0,2)	18 / 27	29.5	8.0	1.0 - 4.0	25
52109015	CLICK BLK 25	25,3 (-0,2)	22 / 14	30.5	8.0	1.0 - 4.0	25